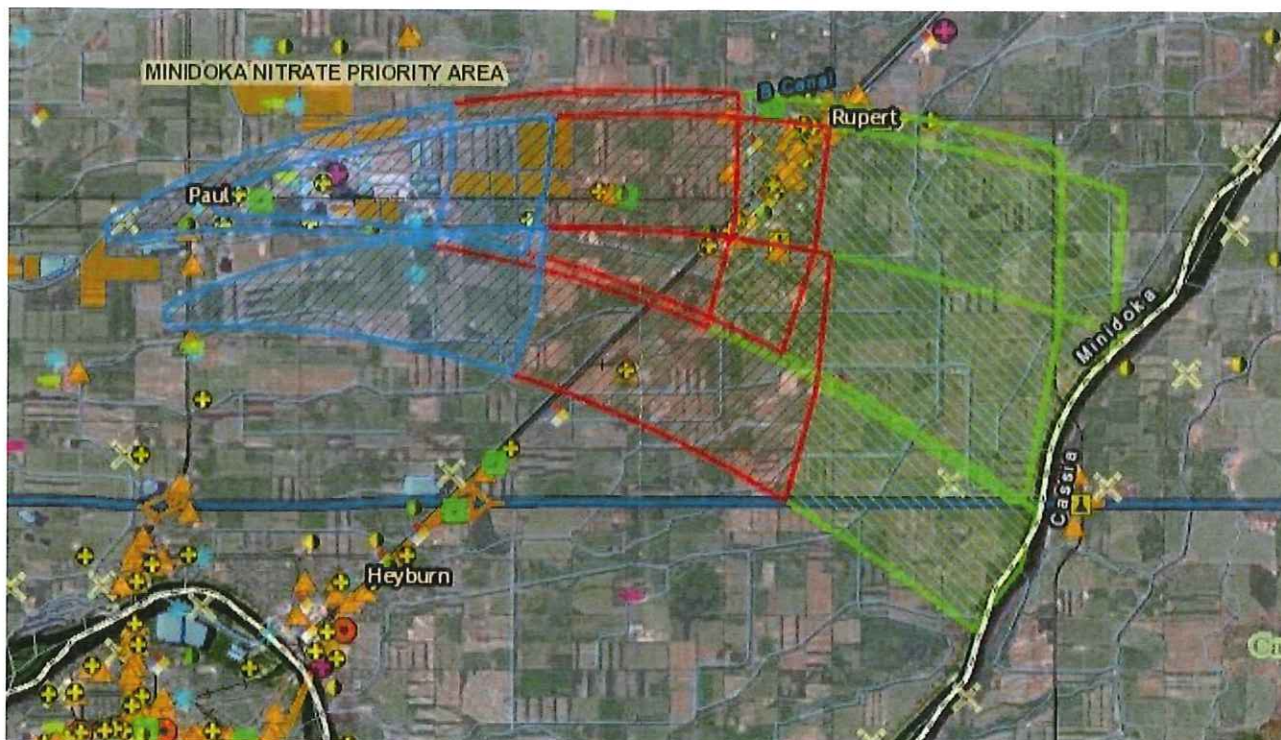


What is Source Water?

Source water is untreated water from surface and ground sources. Groundwater is water from rain or snow that seeps below the ground and pools in cracks and spaces beneath the earth's surface. It is a valuable resource since it makes up for 100% of Paul's drinking water. Groundwater supplies are not endless. Human activities can use up groundwater so that is not available, or pollute groundwater so severely that the damage may be very difficult and costly to clean up.



Time of Travel

Map taken from www.deq.idaho.gov

This map shows the areas that contribute drinking water to the residents of Paul. A drop of water at the ground surface in the blue zone is predicted to take 0-3 years to travel through the ground and to the wells that supply the City, where it is then distributed to your homes, businesses, and schools. Any contamination moving with the water would take the same amount of time to reach the well. This map shows you the area that *most* needs protection in order to keep your drinking water sources clean and safe. *Please note: the City of Paul is required to perform routine testing to ensure your water is safe. Any contamination in your groundwater source is removed by the City of Paul prior to distribution to the public.*

What is Source Water Protection?

Source Water Protection is simply protecting sources of drinking water from contamination or over use. The City of Paul has been working to protect its drinking water source, and public participation is strongly encouraged.

The City of Paul would like to prevent degradation of groundwater *before* it occurs. Once groundwater has been polluted it is extremely difficult to fix the problem. Paul would be in a state of emergency if it were to have its source of water contaminated or used up. It is up to everyone to act responsibly and protect this critical resource. **Contact the City Hall for ideas on how you can help!**

What will Protection Do?

- Ensure that enough safe, clean drinking water is available for our homes and businesses.
- Protect current and future sources of municipal drinking water from contamination.
- Safeguard our health and the health of our families now and in the future.

About the Plan

The City of Paul and Idaho Rural Water Association have combined efforts to protect your groundwater sources by creating a **Source Water Protection Plan**. The ultimate goal of this plan is to protect you and your family.

Drinking water protection not only protects the health of Paul's residents, it saves your City money. The City of Paul Source Water Protection Plan includes maintenance and protection measures for your municipal wells. Paul chose to create this plan with the idea that *prevention* always costs less than *treatment*.

Safe, clean drinking
water -
it's everyone's
responsibility.

You Can Help

Get actively involved in your community's drinking water protection.

- **Don't flush** anything down the toilet that isn't human waste
- **Don't Over Fertilize** your lawn with harmful chemicals
- **Be a watch dog** and report any suspicious activity harming your water
- **Teach your children** where your family's water comes from

Contact

City of Paul
(208) 438-4101

Adrianna Hummer
IRWA Source Water Specialist
(208) 392-3576

For more information on your community's Plan, kids' activities, and community resources, contact:

Idaho Rural Water Association
(208) 343-7001
www.idahoruralwater.com



Publication by :
Idaho Rural Water
Association
2017

Your Community

Your Source Water Protection Plan